

CellaVision® Body Fluid Application

CellaVision Body Fluid Application enables laboratories to automate, standardize and simplify morphological examination of body fluid preparations.

The application supports:

- **WBC Differential;** by delivering a comprehensive pre-classification into 5 cell types

When implemented together with CellaVision analyzers and supporting software, CellaVision Body Fluid Application speeds up and simplifies the review process while delivering more standardized results.



Features

Digitize the entire sample area and tag regions of interest

View cell classes side-by-side, or all cells in a full screen view

Adjust magnifications of cell images

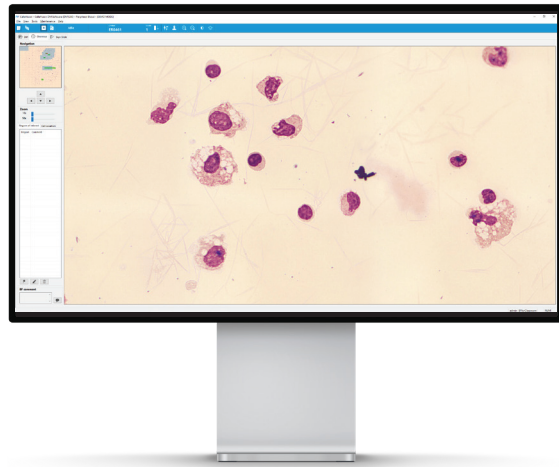
Add your own reference cells to create a reference library

Tag or add comments to any slide, cell class, or specific cell

Share slides and cell images with colleagues for collaboration and consultation

Export and email cell images for consultation, validation or presentation

When re-classification is needed, cells are easily dragged and dropped into the appropriate cell class



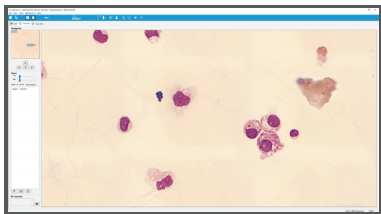
How does it work?

- The software extracts cell features from digital images and delivers a pre-classification of cells using innovative AI technology
- The pre-classification is then reviewed and verified by a Medical Technologist

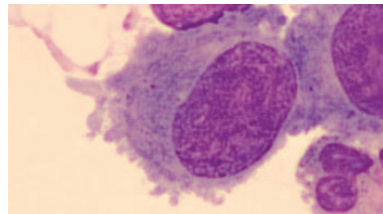
Why CellaVision Body Fluid Application?

CellaVision Body Fluid Application offers an easier way to examine and review body fluid preparations:

- Automated pre-classification speeds up the review process
- Standardized operational procedure and validation process promotes consistency
- Innovative functionalities and integrated tools promote analysis accuracy



BF zoom



Single cell image

CellaVision® Body Fluid Application

Technical Specifications

SLIDE PREPARATION METHODS

- Standard cytocentrifuge preparation
- Default settings for Shandon™/Wescor™/Statspin™

STAINS

Romanowsky stains

- May Grünwald Giemsa,
- Wright Giemsa
- Wright
- RAL MCDh

RESULT PARAMETERS

- WBC pre-classification: Neutrophils, Eosinophils, Lymphocytes, Macrophages (including Monocytes), Other (Basophils, Lymphoma cells, Atypical lymphocytes, Blasts and Tumor cells) and Unidentified
- Non WBC pre-classification: Smudge cells and Artefacts
- User has the ability to add additional cell classes for manual re-classification

ANALYZERS

- CellaVision® DM1200
- CellaVision® DM9600

Specifications are subject to change without notice. This product may not be available in all markets.