

CellaVision® DM9600

CellaVision DM9600 is designed to automate and simplify the process of performing peripheral blood and body fluid differentials. The system leverages high-speed robotics and digital imaging to automatically locate and capture high-quality images of cells. When implemented together with CellaVision applications and supporting software, CellaVision DM9600 becomes the engine of a streamlined and automated digital cell morphology workflow, enabling laboratories to work smarter and perform better.

Developed to meet the needs of big labs with high-volume testing requirements.



EVOLVING MICROSCOPY | ELEVATING HEALTH CARE



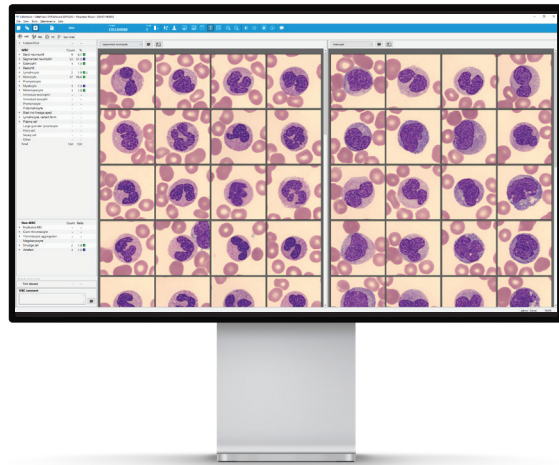
Features

Automatically captures digital images of cells from peripheral blood smears and body fluid preparations

Loading capacity of 96 slides, with mechanism for continuous feed

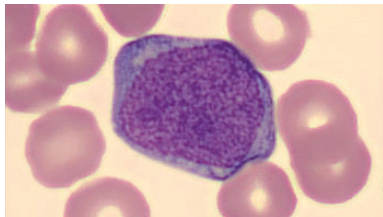
Approximately 30 slides throughput per hour*

Creates digital scan of pre-defined area of any interesting specimen

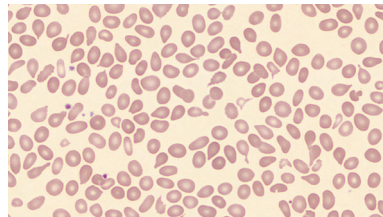


Why CellaVision DM9600?

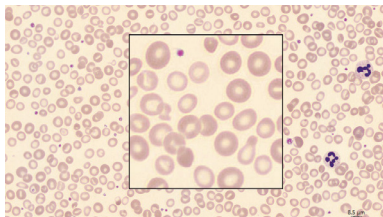
- Automates analysis of WBCs, RBCs and body fluids including an overview of the feathered edge.
- Constructed on a proven technological platform that is reliable, easy to operate and requires minimal maintenance.



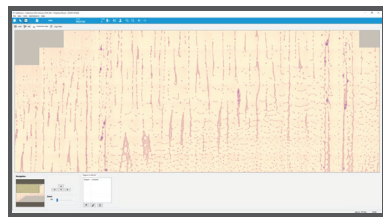
Single cell image



RBC overview



RBC zoom



Feathered edge view

CellaVision® DM9600

Technical Specifications

SLIDE HANDLING

- Requires barcode labeled slides with clipped/round corners
- Slides are loaded into magazines with the capacity of 12 slides. Fits eight magazines.
- Analyzes slides with peripheral blood smears and body fluids either batched in dedicated magazines or mixed when interfaced to a LIS

IMMERSION OIL

- Automatic dispensing
- Easy replacement of oil pack

QUALITY CONTROL

- Cell location accuracy test for the verification of the hardware and stain quality

ARCHIVING OF RESULTS AND IMAGES

- LAN

STORAGE CAPACITY

- Primary storage: On local hard drive up to 4,000 slides (20 GB)
- Secondary storage: Unlimited when transferred to external storage media

PRINTER SUPPORT

- Laser/inkjet printers supported by Windows

COMMUNICATIONS

- Bi-directional LIS support, ASTM
- Ethernet 10/100 Mbps
- Multiple CellaVision DM analyzers can share a database
- E-mail

SYSTEM COMPONENTS

- Slide Scanning Unit
- CellaVision DM Software
- System Computer with Windows

ELECTRONICAL SPECIFICATIONS

- Voltage input: 100 to 240 VAC
- Current input:**
- System computer: 1.4 to 0.7 A
- Slide scanning unit: 0.6 to 0.3 A

CLEARANCE

- CE, 510(k)

SIZE (Width x Depth x Height)

- 580 × 560 × 790 mm
- 22.8 × 22 × 31,1 inches

WEIGHT

- 93 kg / 205 lbs

THROUGHPUT*

Peripheral Blood:

- Up to 30 slides/h for complete differential (100 WBC+RBC+PLT)

Digital Slides:

- Up to 20 slides/h for 10 × 10 mm in 10x
- Up to 1,5 slides/h for 10 × 10 mm in 10x + 50x

Body Fluids (based on 6 mm sample area):

- Up to 15 slides/h for differential (100 WBCs + 10x)
- Up to 3 slides/h for differential (100 WBCs + 10x + 50x)

OPTIONAL SOFTWARE / APPLICATIONS

- CellaVision® Advanced RBC Application
- CellaVision® Body Fluid Application
- CellaVision® Remote Review Software
- CellaVision® Server Software
- CellaVision® Proficiency Software

ACCESSORIES

- CellaVision Immersion Oil Pack
- Barcode labeled slide magazines
- QC barcode labels
- Label printer kit

* Processing time may vary depending on smear quality, WBC count and number of non-WBCs. Specifications are subject to change without notice. This product may not be available in all markets.