

CellaVision® DC-1

CellaVision DC-1 is designed to automate and simplify the process of performing blood cell differentials in low-volume laboratories. The system leverages high-speed robotics and digital imaging to automatically locate and capture high-quality images of cells. It allows both stand-alone and networked installation.

In a stand-alone low-volume hematology laboratory, CellaVision DC-1 innovates the process of performing cell differentials.

When used in a small satellite site in a health network CellaVision DC-1 allows the process and review of blood smears locally and remotely as well as improving collaboration with colleagues and morphology experts at other sites.



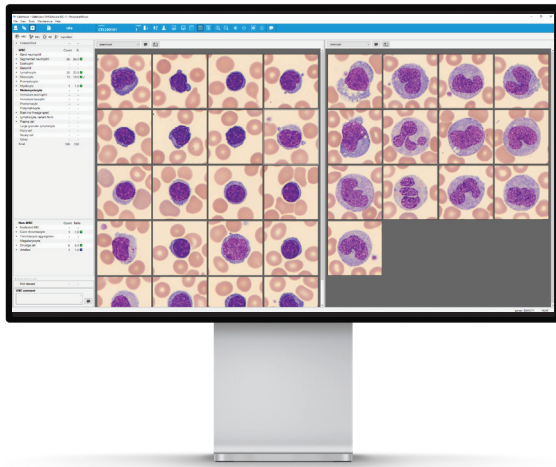
Features

Capture digital images of cells from blood smears

Automate the analysis of WBCs, RBCs, PLTs and an overview of feathered edge

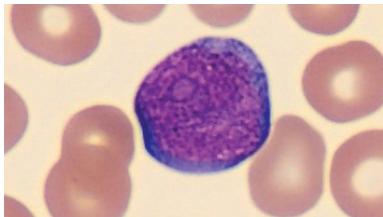
Create digital scans of any interesting specimen

Compact Design with small foot print

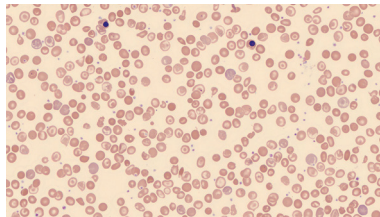


Why CellaVision® DC-1?

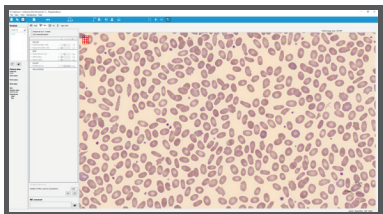
- Automates analysis of WBCs, RBCs and PLTs including an overview of the feathered edge.
- Custom-designed to optimize the process of performing blood cell differentials in low-volume labs. It effectively automates and simplifies the work that is traditionally done by Medical Technologists using conventional microscopy.



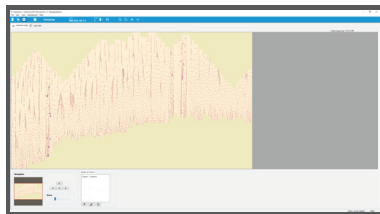
Single cell image



RBC overview



Grid view



Feathered edge view

CellaVision® DC-1

Technical Specifications

SLIDE HANDLING

- Accepts slides with ground edges, clipped, round or square corners
- Order ID for slides entered either manually or using an optional barcode reader
- Slides are loaded one slide at a time
- Analyzes slides with blood smears

IMMERSION OIL

- Manual oil dispensing

QUALITY CONTROL

- Cell location accuracy test for the verification of the hardware and stain quality
- Built-in smear check

ARCHIVING OF RESULTS AND IMAGES

- LAN

ACCESSORIES

- Immersion Oil
- QC barcode labels
- Label printer kit
- Barcode reader, hand held

STORAGE CAPACITY

- Primary storage: On local hard drive up to 1,500 slides (20 GB)
- Secondary storage: Unlimited when transferred to external storage media

PRINTER SUPPORT

- Laser/ inkjet printers supported by Windows

COMMUNICATIONS

- Bidirectional LIS support, ASTM
- Ethernet 10/100 Mbit/s
- Multiple CellaVision® DM/DC analyzers can share a database

SYSTEM COMPONENTS

- Slide Scanning Unit with integrated PC and Windows 10 embedded
- CellaVision® DM Software

ELECTRONICAL SPECIFICATIONS

Analyzer

- Voltage input 12 VDC
- Current input 7 ADC

Power supply

- Voltage input, power supply 100–240 V
- Voltage frequency, power supply 50–60 Hz
- Current input 1.2 to 0.6 A

CLEARANCE

- CE, 510(k)

SIZE (WIDTH X DEPTH X HEIGHT)

- 280 x 390 x 370 mm
- 11.0 x 15.4 x 14.6 inches

WEIGHT

- 11 kg /24 lbs

THROUGHPUT*

- Up to 10 slides/h for complete differential (100 WBC + RBC + PLT)

SLIDE PREPARATION METHODS (WEDGED)

- Automated slide makers and stainers
- RAL SmearBox & RAL StainBox
- HemaPrep® automated blood smearing device
- Manual smears

STAINS

- Romanowsky stains (May Grünwald, Giemsa, Wright Giemsa, Wright, MCDh)

OPTIONAL SOFTWARE / APPLICATIONS

- CellaVision® Remote Review Software
- CellaVision® Server Software
- CellaVision® Proficiency Software

* Processing time may vary depending on smear quality, WBC concentration and number of non-WBCs. Specifications are subject to change without notice. This product may not be available in all markets.